



Your Current Vehicle: 2008 Honda Fit

Rate this article: ★ ★ ★ ★ ★

# Front **Damper**/Spring Removal and Installation

NOTE

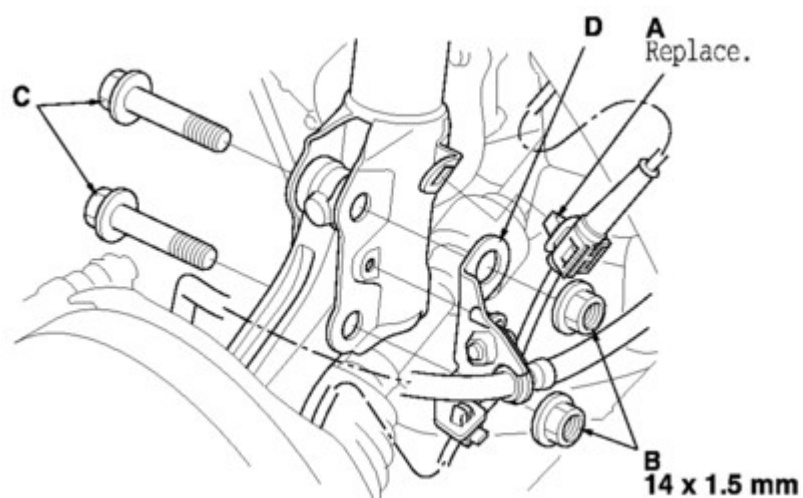
Applicable vehicles:

- 2007-08 Honda FIT

## Front **Damper**/Spring Removal and Installation

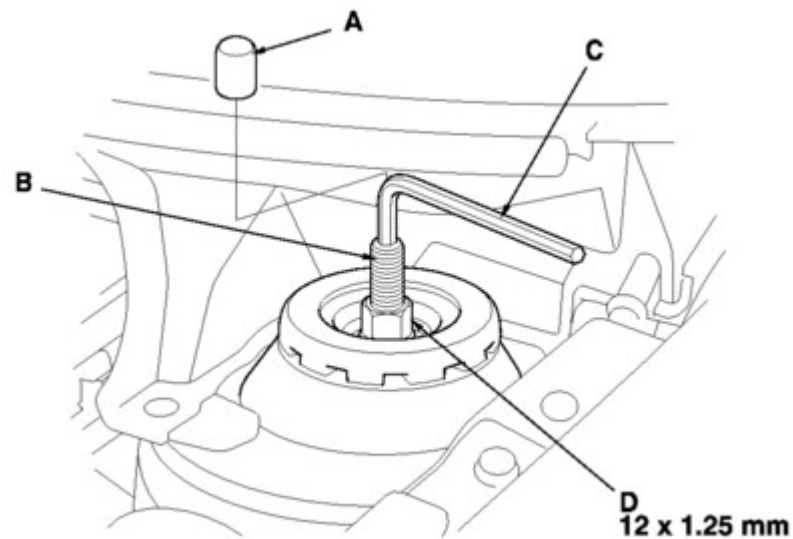
### Removal

- Raise the front of the vehicle, and support it with safety stands in the proper locations.
- Remove the front wheel.
- Disconnect the stabilizer link from the **damper**.
- Remove the wheel sensor harness clips (A) from the **damper**. Do not disconnect the wheel sensor connector.



Click to Enlarge

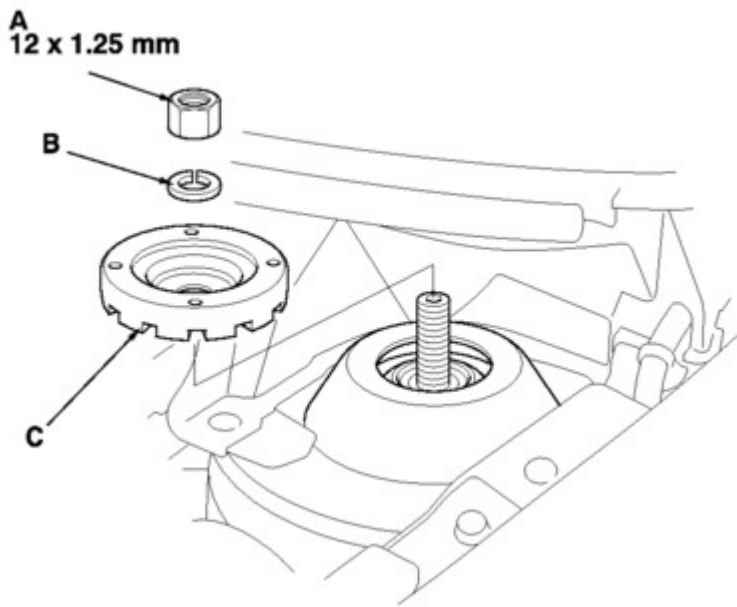
- Remove the flange nuts (B) while holding the **damper** pinch bolt (C) with a wrench, then remove the **damper** pinch bolts and the brake hose bracket (D).
- Remove the cap (A) from the top of the **damper**.



Click to Enlarge

- Hold the **damper** shaft (B) using a hex wrench (C), and loosen the 12 mm nut (D).
- Remove the 12 mm nut (A) and the wave washer (B), then remove the **damper** mounting base (C)

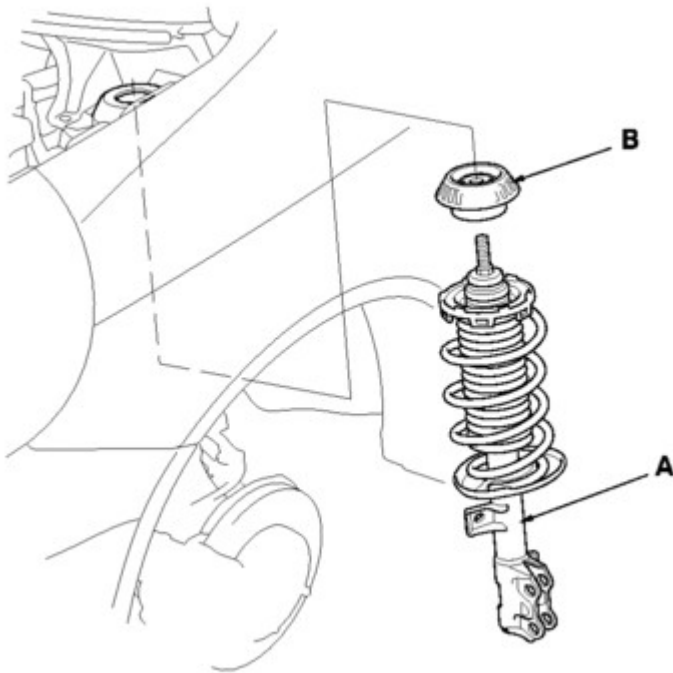
from the body.



[Click to Enlarge](#)

- Remove the **damper** assembly (A) and the **damper** mounting cushion (B).

NOTE: Be careful not to damage the body.

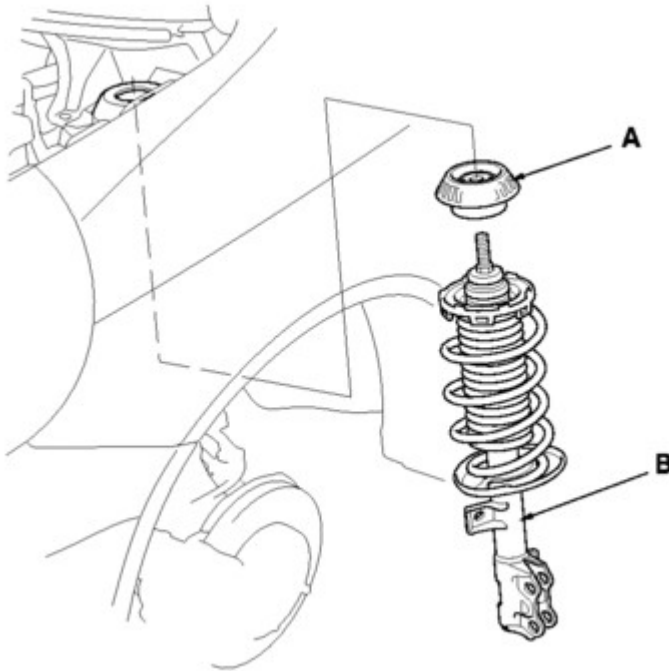


[Click to Enlarge](#)

## Installation

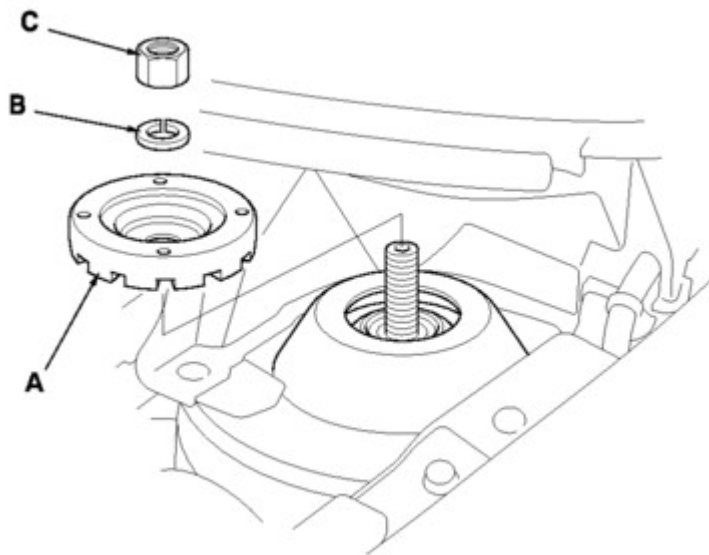
- Install the **damper** mounting cushion (A) and the **damper** assembly (B) onto the frame.

NOTE: Be careful not to damage the body.



[Click to Enlarge](#)

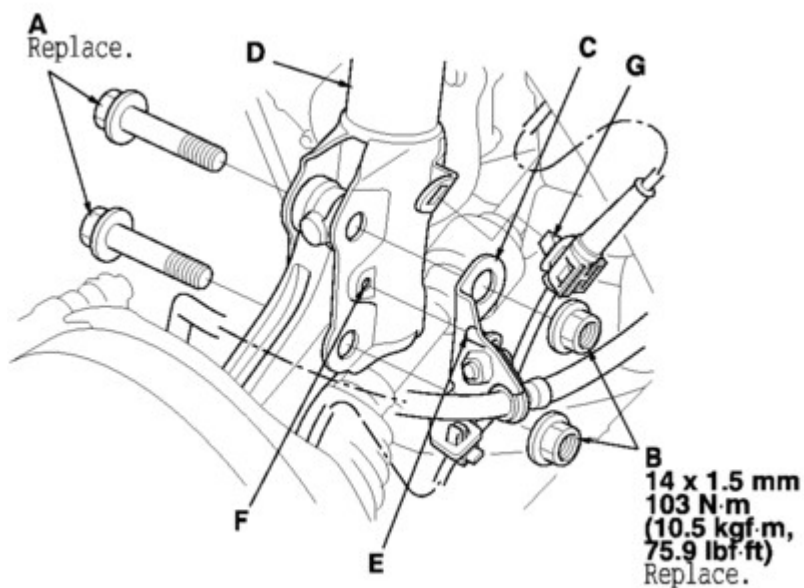
- Install the **damper** mounting base (A) and the wave washer (B), then loosely install the 12 mm nut (C).



[Click to Enlarge](#)

- Loosely install new **damper** pinch bolts (A) and new flange nuts (B) with the brake hose bracket (C) to the **damper** (D).

NOTE: Align the pin (E) of the brake hose bracket to the positioning hole (F) on the **damper**.

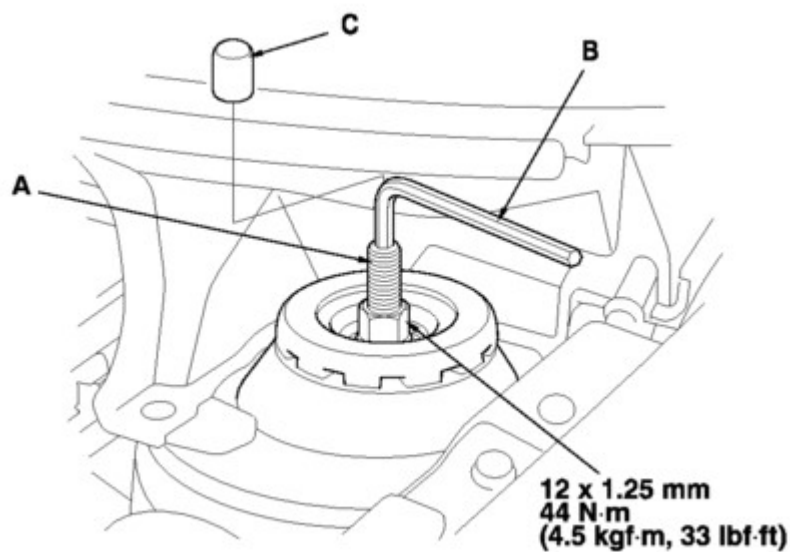


[Click to Enlarge](#)

- Install the wheel sensor harness clip (G).
- Raise the front suspension with a floor jack to load

the suspension with the vehicle's weight.

- Tighten the **damper** pinch bolts and new flange nuts to the specified torque value while holding the **damper** pinch bolt with a wrench.
- Install the stabilizer link to the **damper** and tighten to the specified torque value.
- Hold the **damper** shaft (A), and with a hex wrench (B), tighten the 12 mm nut to the specified torque value.



[Click to Enlarge](#)

- Install the cap (C) to the top of the **damper**.
- Clean the mating surface of the brake disc and the inside of the wheel, then install the front wheels.
- Check the wheel alignment, and adjust it if necessary.

Copyright ©2019 by Chilton, an imprint of Cengage Learning

[\(/lh/Home/Index/mwelljZjyfO15rqf8-vRaQ-EVRHgV1B6uy8fJMPyuh\\_NQ7TY1\)Home](#)

[Terms and Conditions \(/www.cengage.com/content/footer/terms\\_of\\_use.aspx\)](#)

[Privacy Statement \(/www.cengage.com/content/footer/privacy\\_statement.aspx\)](#)

[Contact Us \(/www.cengage.com/contact/\)](#)

